

Newsletter



Looking ahead ...

Welcome to the latest edition of our Newsletter. You'll find details of two forthcoming events on page 2 – we hope you will join us for one or both. We are currently planning events for next year, including the annual day school and the recording conference. We also hope to resume our Third Thursday Talks soon.

We were pleased to welcome two new members to the committee in April and we meet them on page 3. A small subgroup of the committee is considering the future direction of the Group – read some initial thoughts in David Cant's item on page 4 and Tony Robinson's article on page 5. We'd be very interested to hear your views or suggestions as to what the Group should be doing and how it operates.

Following our enjoyable visit to Easingwold in July, we take a look at the town and its buildings on pages 6 and 7.

Tony Robinson relates another encounter with an old building on page 9, this time in Husthwaite, revealing how an older building is concealed within what on first glance appears to be a terrace of nineteenth century cottages.

We thank members Allan Adams and Kevin Illingworth for permitting us to include more of their wonderful sketches on pages 10 and 11 of this issue.

Photos: Buildings in Bridlington's Old Town, seen during the YVBSG recording conference in May. Above left: Artisan Mannerism at Hebblethwaite House, Westgate, Bridlington. Left and above right: High Street, Bridlington.

Future YVBSG events: dates for your diary

A visit to Newlathes Manor House, Horsforth, and Kirkstall Abbey

Saturday 28 September 2024



Newlathes Manor House

Earlier this year I visited Newlathes Manor in Horsforth with a friend when he showed the local history group round. The owners have agreed to permit me to bring up to 20 members to visit. It's a complicated building but in essence is an aisled hall with a rear aisle under a low sloping catslide roof heated by a large segmental-arched stone fireplace set next to the original rear Tudor-arched doorway – probably the kitchen originally.

It has a separate housebody with seventeenth century panelled walls, and original doors with metal catches. Its ceiling has a pair of hefty chamfered spine-beams with unusual timber sleeves that probably cover scarf-joints – evidence for a bressummer fireplace (now gone). The attached former two-storey parlour wing, now a small cottage, has the remains of timber-framing (wall-plate, corner posts and braces) and a large external chimney stack for fireplaces on both floors.

Of greatest interest is the four-bay aisle arcade visible at the first floor in a corridor the length of the building with board-and-muntin panelled walls set between jowled posts, with mortices for large braces, and principal rafters that have trenched purlins supported by an aisle-tie with an angled strut. The end bay has stone walls and windows on two sides with an angled corner fireplace. Here the timber structure is covered by more plank wall panelling, the styles with reeded edges, incorporating nine panels of Tudor linenfold panelling, very fine and rare carved with a cross design suggesting ecclesiastical origin – perhaps from the Prior's lodging at nearby Kirkstall Abbey which we will visit in the afternoon.

We'll meet at 10.30am and will spend the first half hour looking at the outside. Make your own arrangements for lunch – options nearby include a Starbucks and a KFC, and a large Toby Carvery. We'll then visit Kirkstall Abbey, reassembling at 2pm. Kirkstall Abbey has two museums, one in the former cloister features a re-created Victorian street, done by Peter Brears when he was director of Leeds City Museums, inspired by the one at the Castle Museum in York where Peter was previously director. To book a place, please ring Peter's mobile on 07304 048 049. Confirm: peterthornborrow@gmail.com.

Peter Thornborrow

Bridlington and Boynton Review

Saturday 5 October 2024

After our successful recording conference based in Bridlington we are getting the reports ready. Team leaders are meeting at the end of August, in preparation for the follow-up day on Saturday 5 October. In the morning we will meet in the Priory Rooms in Bridlington for presentations on the buildings recorded. Householders and anyone who has helped or is interested are welcome to attend.

After a buffet lunch, provided by the excellent outfit that fed us so well on the Sunday in May, we'll travel to Boynton. There we have a visit to Boynton Hall, courtesy of the owner, Mrs Marriott. It's a multi-period building and there is much



The garden house at Boynton Hall

of vernacular interest as well as work by John Carr and Jeffry Wyattville.

There are a couple of presentations about the building and its surroundings on YouTube to whet your appetite, including a study of the hall by Adrian Green of Durham University, previous VAG president. We're grateful for his help in arranging the visit.

We will then have a look at the village and the three buildings recorded.

We can only take 25 people to Boynton Hall, and anticipate considerable interest in the day. Although the morning meeting is open to all, booking for lunch and the afternoon is essential.

Please complete and return the booking form (already emailed to members and available on the website) by 14 September 2024. Any enquiries to David Cant or Gunhild Wilcock, 3 Middle Hathershelf, Luddendenfoot, Halifax, HX2 6JQ or email davidjcant@hotmail.com.



Boynton Hall

Meet the new faces on the committee

As reported in the previous Newsletter, we welcomed two new members to the committee at the AGM in April— Jan Goode as Treasurer and Mark Womersley as a Committee Member. We invited Jan and Mark to tell us a little about themselves.

Jan Goode

My interest in vernacular architecture started when my husband and I purchased a seventeenth century Grade II listed cottage in Upper Wharfedale. I started researching the history of the cottage and joined the Upper Wharfedale Heritage Group and the Yorkshire Vernacular Buildings Study Group. I then decided to expand my knowledge of historic buildings by doing a Master's degree in Historic Building Conservation at Kingston University. I did my dissertation on 'Evidence for the Great Rebuilding in Upper Wharfedale' and found the resources of the YVBSG very useful, including a 1982 building recording for my own cottage. To help with my research projects I did training with West Yorkshire Archives on how to transcribe historic documents.

In addition to researching and recording Yorkshire vernacular buildings, I have also volunteered as a researcher with several organisations, including the National Trust.

I am hoping my experience in consultant and project lead roles in the IT Service Management industry will prove useful in my role on the YVBSG committee and as Treasurer.



Mark Womersley

Mark has been involved with vernacular architecture since working as a Conservation Officer at Calderdale Council in the mid-1990s. Our former chairman, Peter Thornborrow, spurred his interest in the subject in his younger years. For the last twenty-seven years, Mark has run his company, Womersleys Ltd (www.womersleys.co.uk), supplying materials for historic building conservation work. Within this company and his related consultancy (www.mwomersleys.co.uk), Mark provides heritage training to craftspeople and professionals in the UK and abroad, working in Ethiopia, Iraq, Sicily, Barbados and Antigua. Much of that training revolves around using lime and clay mortars for building, pointing, plastering, rendering and traditional solid floors.



Mark also undertakes ceiling and plasterwork surveys and produces the associated specifications for the repair of traditional lime stucco work, cast gypsum and decorative fibrous plaster, working recently at Leeds Grand Theatre, Rochdale Town Hall, Wentworth Castle, Temple Newsam and The Royal Exchange in Manchester, together with many other public, domestic and ecclesiastical properties. Mark brings his surveying and interpretation skills to the Group but is also a specialist in historic building materials, including the analysis of lime mortars, plasters, floors, historic paint samples and salt contamination.

Academically Mark has a first degree in planning, postgraduate diplomas in urban design and environmental studies, an MA in Architectural Conservation, and is just finishing a PhD at SOAS (School of Oriental and African Studies), where he has researched the vernacular architecture of northern Ethiopia.

List of Members 2024

The List of Members for this year is now available in the Members' Area of the website. You just need to log in with the username and password which was included in your membership renewal letter. The list contains only those members who agreed on the membership renewal form to be included (172 members). The current total number of members is 211.

Next committee meeting

The next full meeting of the committee will be held in York on Saturday 19 October 2024, although a short meeting to start planning events for 2025 will take place by Zoom at the end of August.

If you'd like to raise any matters, or have ideas for future events, please contact the Secretary, Mary Cook.

Some thoughts about the future

I'd like to welcome new members to the Group and thank those involved actively both through the committee or otherwise. In particular, congratulations to our Newsletter editor, Lorraine Moor, for her dedication and diligence in revamping the format of this newsletter recently and continuing to marshal contributions. We are very fortunate, as a small group, in having so many members willing to get involved. What does the future hold? Here are some of my thoughts on our activities.

Our Group was established over fifty years ago with the primary aim of studying ordinary historic buildings. This was part of a more general process in historical study of looking at everyday life and ordinary people. We have now produced detailed reports on nearly 2000 buildings. Should we continue with 'more of the same'? What are the alternatives? It is a topic the committee has discussed over the years when we try and decide where to focus our efforts.

In most of our recording we rely on the interest and goodwill of the householders and owners of properties. We 'reward' their patient support with a detailed description of their building and our interpretation. Usually this is also based on documentary evidence – although I always find it challenging to know when to stop, especially now so

much information is easily available online.

This process brings together a wide range of information on a locality and the families who have owned and lived in a building. Looking back, much of this does not feature in the Group's report on the building and remains in note form in my possession. From time to time (not frequently enough, judging by the volume of paper gradually accumulating!) I discard the 'used' notes. Any connections between people, families and places not already in the public domain are lost. That seems a pity and I wonder if anyone else has found a practical solution that doesn't involve too much extra effort?

Another consideration is the content of the report that is produced. Does it meet the expectations of the householder? Is there a different way of meeting these on the one hand with a less arduous and time-consuming process on the other? In the right frame of mind I quite enjoy writing a report. It is a creative process and you have to put in some effort but in the end it brings satisfaction and enjoyment.

So my thoughts have turned to whether, for example, we should spend time examining the earlier reports and updating them? If you look at reports



from thirty or forty years ago they are quite different from those produced today. Fewer pages, less information about the landscape, surroundings or the other buildings in the vicinity. Although efforts were made to link documentary sources, this usually required visits to distant local studies libraries and archives. Recent digitisation of indexes and easier accessibility have expanded these possibilities enormously. Furthermore, through our web-based map you now can check which buildings have been recorded in your locality.

Although we propose to continue with the pattern of a day school and AGM in spring, a recording conference in May, one-off visits and the Third Thursday Zoom talks, there may be other activities you'd welcome? If we're going to carry on recording, we may need to train some new group leaders, for example. We already give occasional one-off talks on request to local groups and one member, Kevin Illingworth, is very active in spreading the word through talks using his wonderful drawings and photographs. The editorial team of our annual journal, *Yorkshire Buildings*, are always interested in receiving articles and information.

I look forward to hearing your views on the future of the Group and seeing you at events. Thank you for your continued support.

David Cant, Chair,
enquiries@yvbsg.org.uk



Above and top right: Distinctive chimney stacks at Bagby Hall Farm, Bagby, North Yorkshire – one of the Group's early reports dating from 1970 and comprising only a short description with two photographs (YVBSG 0004). Should our future activities involve updating earlier reports?

Mining the archive

With almost 2000 buildings recorded by the Group since 1973, should we be looking at how these records of individual buildings could be used and made more widely available through publication?

For many years now, publication has been focused on the Newsheet/Newsletter and the annual *Yorkshire Buildings*. These serve to keep members informed on future events and provide an account of the recording work undertaken in the previous year.

The only overview of the work undertaken by the Group was the monumental *Vernacular Houses in North Yorkshire and Cleveland* by Barbara Hutton and Barry Harrison back in 1984, when only 700 buildings had been recorded.

I hesitate to suggest a rewrite or update to produce an enlarged 'Harrison & Hutton'; that would be a Herculean task, beyond the scope of any individual or even group of individuals, and the resulting book would be too expensive for many people.

However, in looking at the list of buildings recorded and at the online interactive map, it is clear that there are significant clusters of recorded buildings. There are 45 parishes or places where 10 or more buildings have been recorded, including the towns of Beverley (22 buildings recorded), Easingwold (11), Grassington (22), Guisborough (13), Cawood (17), Knaresborough (26), Ripon (35) and Scarborough (13).

Our work in Beverley has been ably set out in David Cook's recent book *Beverley's Timber Framed Buildings*. At Ripon, where the Group has recorded 35 buildings, much has been published on the early origins and medieval development of the city and cathedral, but there has been little on the vernacular buildings of the city. Likewise at Knaresborough, where much has been written on the castle rather than the buildings of the town.

Recording work has been focused on villages and the countryside, where the survival rate of vernacular buildings is



Town End Hall, Reeth, Swaledale (YVBSG 1248)



Blackburn Hall, Grinton, Swaledale (YVBSG 0662)

much greater than in most towns and cities, with notable concentrations recorded in the northern and western dales and the North York Moors. In the three Swaledale parishes of Muker, Melbecks and Grinton (see photos above and below) for instance, over 80 buildings have been recorded. Each dale forms a coherent geographical unit, with recorded buildings

clustered along the valley bottoms, and they offer scope for local studies, using information from the individual building reports supplemented with extra documentary work (tithe maps, estate maps etc) to provide a wider context.

Elsewhere, there are over 50 parishes or villages where a handful of buildings (fewer than 10) have been recorded, where information from

the building reports supplemented by details from the Village Profiles (where available) made in the 1970s and by tithe map and other documentary information offers scope for producing studies of single villages or groups of villages in an attractive illustrated format.

The Group could continue to pile up data in its archive, but I feel that after 50 years and with almost 2000 buildings recorded, we should be thinking seriously about presenting our efforts to the wider public in a published, accessible format.

Tony Robinson, Editor, editor@yvbsg.org.uk



Lane House, Reeth, Swaledale (YVBSG 0440)

Past YVBSG events

A walk around Easingwold Market Place

We gathered on Monday 8 July 2024 for a fully-booked walk around Easingwold Market Place, led by local historian Valerie Taylor. Amazingly the weather turned out to be warm and sunny – one of the few summery days so far this year!

The town developed from two separate communities: the Uppleby area with Danish origins and the Long Street area which was an Anglian settlement. Current street names offer clues to past industries; Crabmill Lane once led to a mill for crushing crab apples, and Tanpit Lane was the site of the last tannery in the town. Many of the buildings surviving around the Market Place today date from the eighteenth and nineteenth centuries, and Valerie provided useful context and social history by showing old photographs and historical maps as we walked around.

We started our tour at the Galtres Community Centre, built by York architect Walter Brierley in 1897 as a private residence for John Haxby Robinson, a local solicitor. We moved on to look at a number of public buildings including the Town Hall of 1864 (described in Pevsner as ‘a brute of a Town Hall’), the former National School of 1862 (its door lintel inscribed with the ominous



Rocliffe House

warning ‘Learn or Leave’) and the former Police Station. The Commercial Inn dates from the early 1700s; its rear wing runs back from the street in a curved manner, a feature seen elsewhere in the town.



The White House

A market selling local produce has been held in Easingwold for many years and stallholders upheld the concept of fair trade by waiting for a bell to ring before starting to trade, thus avoiding ‘forestalling’. A cast-iron canopy over the market cross was funded by the owners of the nearby White House in the nineteenth century. A garden opposite the front of the Town Hall marks the site of the former fish market.



Re-used beam in carriage entrance

The perimeter of the Market Place is lined with attractive eighteenth century houses. Rocliffe House was occupied at one time by Dr William Rocliffe, a surgeon and physician apprenticed to a Stephen Featherstone (who was known as an apothecary/a surgeon/a man-midwife at different times in the later eighteenth century). Dr Rocliffe was said to have a fondness for cock fighting and probably harboured a cockloft in the house. The Old Vicarage has a central core of 1777, with a pavilion added on each side in the nineteenth century to create a grander impression; a glimpse of the rear from the street shows a small cupola sitting upon a turret-like extension. The White House has been recently recorded by the Group and a report is in preparation; its neighbour, White House Cottage, was recorded in 1982.

At Rowntree House, our attention was caught by the timber ceiling over a carriage entrance, and in particular an intriguing timber with empty slots and a carpenter’s mark ‘IIII’. An enquiry posted on social media confirmed that this is probably a re-used tie beam, turned on its side, with a mortice slot for the top of the post and a dovetail to accommodate the wall plate.



Decorative wall ties



Semi-circular doorhead

Other features spotted around the town included a fire insurance plaque, brick tumbling on gables, decorative iron wall ties and semi-circular door hoods.

Our thanks go to Valerie for leading a very interesting and enjoyable tour, and to Gunhild Wilcock for making the arrangements for the day. We hope to arrange a second walk around a different part of this attractive town at a future date.

Lorraine Moor

From the archive: Easingwold

Further to the YVBSG walk around Easingwold in July, here are some of the buildings previously recorded in the town; all the reports can be found in the YVBSG online archive. Report 0762 states that 'Easingwold has or had a large number of timber houses, all of much the same appearance, and in particular there have been at least three others in Uppleby. They appear to have been the result of a building boom in the late 16th to early 17th century'. One such house in Long Street, now demolished, can be seen in the drawing below.

Lorraine Moor



93 and 95 Long Street (YVBSG 0706). The house (No 93) appears to be purpose-built in the 19th century as a bakery, shop and dining room, with family living accommodation. The cottage (No 95) predates the house and is perhaps c1800 in origin.



Dovecote at rear of 145 Long Street (YVBSG 1705). An 18th century dovecote containing 400 brick-built nest boxes arranged in tiers, with each tier having a projecting ledge to provide a landing area for the birds.



White House Cottage, Market Place (YVBSG 0769). Built 1700-1730 with re-used roof timbers which may be from an earlier house on the site. The adjoining house to the right, White House, has also recently been recorded by the YVBSG.



62 Uppleby (YVBSG 0406). An early 19th century house; the left-hand bay was a shop when recorded. There is evidence of an earlier timber-framed house here, perhaps of c1600, but it does not seem to conform to the axial-stack and baffle-entry plans of other timber houses in Easingwold.



149-151 Long Street (YVBSG 0712). A Vale of York type house demolished in 1953, drawn in 1950 by Keith Burton of Stansfield, Burton and Agar architects' practice. Timbers were conveyed to the Castle Museum in York for re-erection but are said to have been burnt.



36 and 38 Uppleby (YVBSG 0782). Late 18th century house on the right, cottage added on the left perhaps c1840. The housekeeper for No 38 is thought to have lived in the cottage at some point. Re-used timbers in the roof, some with carpenters' marks relating to former uses.



Tudor House and Cottage, Uppleby (YVBSG 0012). Formerly a single timber-framed 3½ bay house with ogee braces and rear and end aisles, probably of the 16th century. Contained two firehoods, one perhaps inserted later than the other.



6 Uppleby (YVBSG 0762). Originally a timber-framed Vale of York type house with rear aisle, with walls rebuilt in brick in the late 18th century onwards. A wide-chamfered beam is stopped with 'Wern-hir' type stops, probably of c1600.

Holidays with hammerbeams

The two-year Landmark Trust project to restore Calverley Old Hall is entering its final months, and bookings for holidays in this outstanding building are now open. Landmark has been caring for this house since 1981 but until now, guests could stay only in the restored north wing. Following the recent renovation, the Landmark property now includes the Great Hall with its late fifteenth century hammerbeam roof. More information at www.landmarktrust.org.uk/search-and-book/properties/calverley-old-hall-5219.

A recorded talk, *The Development of Calverley Old Hall* by Caroline Stanford of the Landmark Trust, is available to watch on the YVBSG YouTube channel.

Heritage Open Days

As always, a huge number of open buildings and events are on offer during this annual festival, which this year takes place from 6 to 15 September 2024. In Beverley, see the sixteenth century wall paintings in the Friary or visit 2 Highgate, a Georgian town house. Explore Dr Buck's House, a derelict Georgian town house being restored in Settle. See seven of the 16th and 17th century halls of Sheffield and NE Derbyshire on a seven-mile walk from Totley. View the 17th century roof timbers at Hebblethwaite House in Bridlington. Drop in to the 'History on your doorstep' event at Bridlington Priory Rooms on Saturday 7 September, where the YVBSG will have a stand. Look for local publicity or see www.heritageopendays.org.uk.

The character of North York Moors villages

The North York Moors National Park Authority is developing a Design Code, intended to provide specific, detailed parameters for the physical development of the area. At the time of writing, further details are available at www.northyorkmoors.org.uk/planning/policy/have-your-say-on-the-design-code.

Scroll down the webpage to the 'What's special about our villages' section where you will find an alphabetical list of villages; each entry contains a useful outline of the character and architecture of the settlement, together with a short video.

Next Newsletter

The next Newsletter will be in November 2024 – please send any contributions to the editor at newsheet@yvbsg.org.uk by 31 October 2024. Short articles on buildings or features would be appreciated, as well as details of publications or events of interest to other members.

In the pipeline

At some future date, Mark Womersley plans to give a lecture for the YVBSG on the traditional paints used to decorate vernacular and polite buildings between the sixteenth and nineteenth centuries. Watch this space!



Photographs of possibly 16th century painted decoration, enlivening the upper chamber at Kirkby Old Hall in Cumbria.



Encounters with old buildings

Castle Terrace, Husthwaite

During the winter of 1986-7, I was wandering around Husthwaite in the Vale of York, taking photographs for a proposed conservation area designation. January was never the best time of year for this, with short days, low sun and lower temperatures, but we had deadlines to meet.

One building I photographed was Castle Terrace, a fairly undistinguished looking row of four cottages, rendered, with pantile roofs and a uniform arrangement of four panel doors in timber doorcases and four pane sash windows, seemingly of late nineteenth century date.

On a later visit to Husthwaite, I stopped to look again at Castle Terrace. The render to No 2, 'Kates Cottage', and its doorcase, had been removed, revealing a much larger doorway infilled with stone blocks, and framed by a heavily chamfered door jamb and lintel. The lintel carried a partly obliterated date 16..7, possibly 1617 or 1647?



Castle Terrace, photographed January 1986



Older doorway revealed at Kates Cottage, photographed September 1989



Remnants of mullioned window at Kates Cottage, photographed September 1989

At first floor level, the removal of render had revealed a wide mullioned window surround into which a four-pane window had been inserted in a deepened opening. The three-piece lintel had an ovolo moulding, but there was no sign of the missing mullions.

The local Jurassic sandstone walls were badly eroded, hence the need to render; but what did these window and door features mean? Clearly, this was not a nineteenth century building, but something much older. The construction of terraced housing goes back a long way – at least to the fourteenth century (see Lady Row in York). But it was essentially confined to towns until the nineteenth century, and even then, not always found in villages.

My guess is that Castle Terrace began as a single building, possibly a farmhouse, extended with outbuildings and converted to cottages in the nineteenth century, a not uncommon event at that time. This was confirmed by a later online search which revealed the website of the Husthwaite Local History Society (www.husthwaitehistory.co.uk), and their paper 'Husthwaite House Plots: village dwelling sites from the early seventeenth century to 1841' by Stuart Marriott.

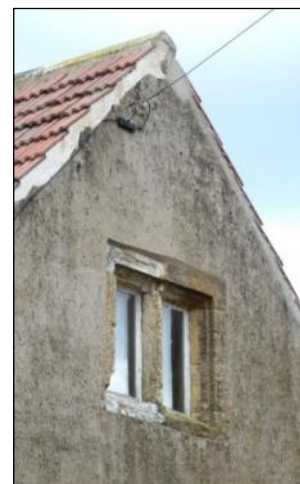
The author has traced the history of every dwelling recorded on the 1841 Tithe Map back to the seventeenth century wherever possible. Tithe Map entry No 36 covers the present day Holly Cottage and what later became Castle Terrace.

In 1841, the main house on this site was a single dwelling (described as 'house, garden and orchard'). It was either rebuilt or much modified at a later date to become the four cottages.

The earliest record is in 1662, of a house with a single hearth, occupied by William Prest. By 1670, it had been rebuilt or much enlarged to three hearths. In 1678, James Prest of Brenk, near Coxwold, conveyed the house, garth, barn and orchard to Thomas Wailes. The house passes through various hands in the early nineteenth century, to 1841.

Finally, what of the name? There never has been a castle in Husthwaite, and the name could be an ironic reference to the humble status of these cottages. At one time, there was a dwelling named 'Cob Castle' near Bedale, presumably an ironic name.

Tony Robinson, editor@yvbsg.org.uk



A surviving mullioned window in the attic gable, photographed July 2024

Stacking up the evidence

When looking at buildings, don't forget to look up! Chimney stacks can tell us a lot about a building; for example, corbels might indicate the former existence of a firehood. The splendid drawings below are by Kevin Illingworth and illustrate some internal and external chimney stack features spotted around Yorkshire and Lancashire.

Jackson's Farm was visited during a YVBSG excursion into Lancashire in July 2012, and more information about this building and others seen that day can be found in *Yorkshire Buildings* 41 2013.

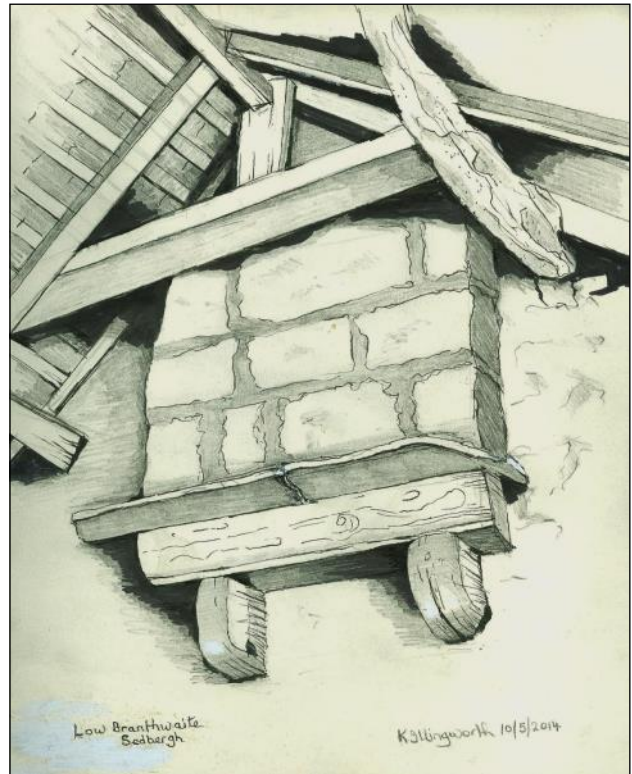
Low Branthwaites Farm was recorded by the YVBSG in 2014 and the report is available in our archive (YVBSG 1833).

A photograph of the unusual stack at Roughlee Old Hall can be found in Newsheet 113 (December 2023), and more images feature in the short video 'A walk around Barrowford' on our YouTube video at www.youtube.com/@yvbsg.

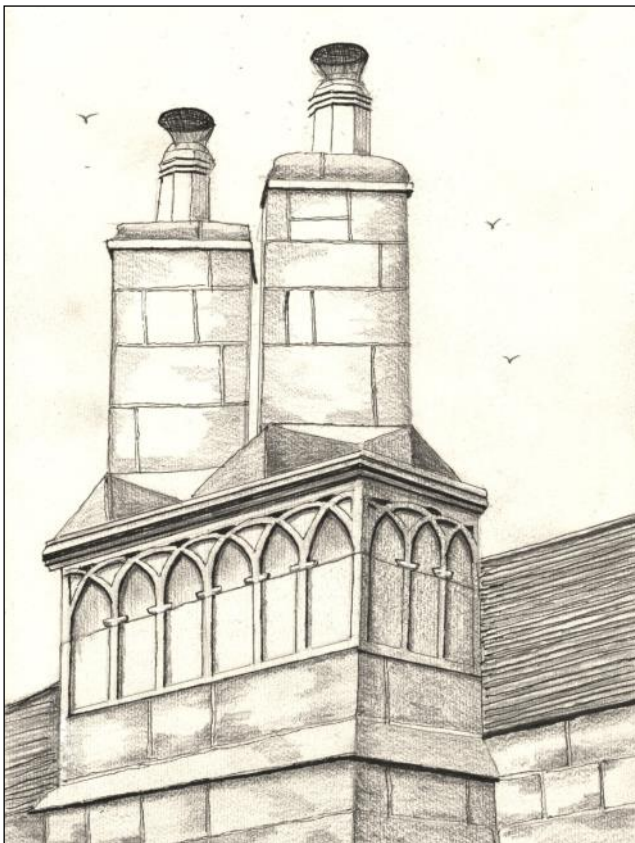
Austwick Hall was recorded by the YVBSG in 2008 and the report can be found in our archive (YVBSG 1740).



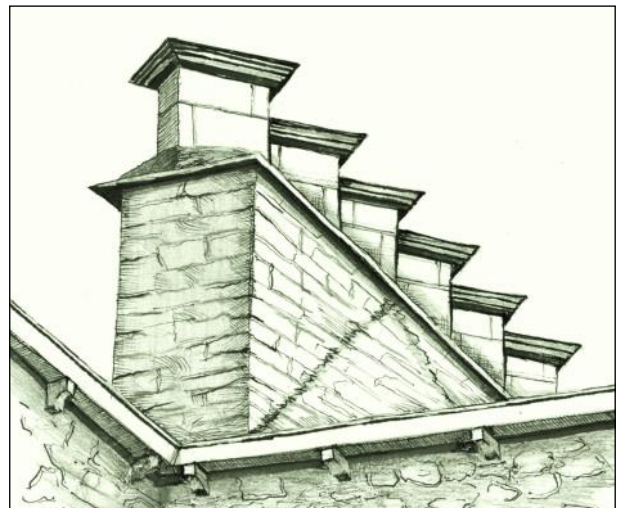
Jackson's Farm, Worsthorne – drawn September 2015.
Internal corbelled cap for firehood.



Low Branthwaites, Sedbergh – drawn 10 May 2014.
Corbelled stack drawn by direct observation.



Roughlee Old Hall, Roughlee (Pendle) – drawn May 2024.
Extruded stone stack with arched decoration as if it was a window. Unknown elsewhere in Lancashire.

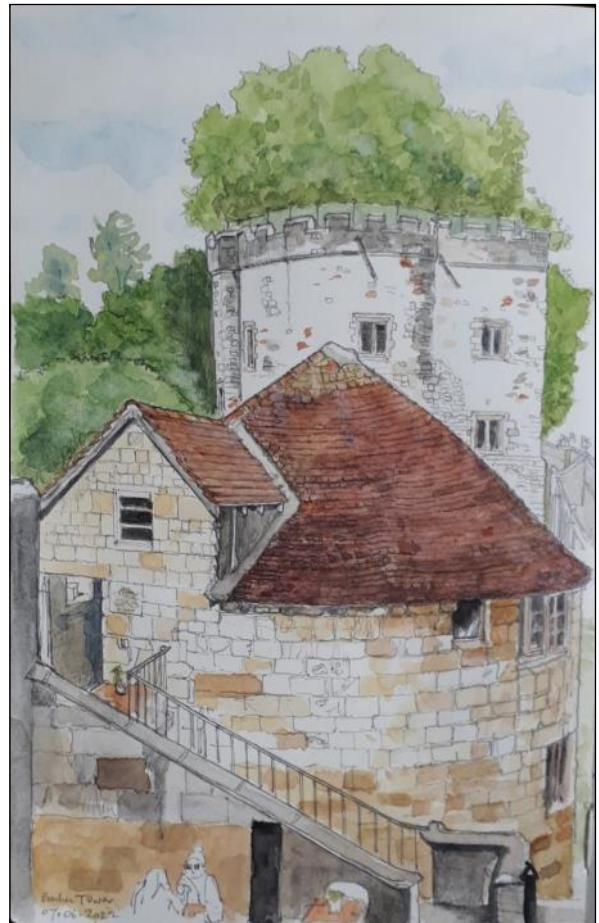


Austwick Hall, north Craven – drawn February 2015.
Six diagonally-set shafts.

A recording challenge?

You might think some of the roofs we come across would be difficult to draw, but this one could take some beating for complexity! It's in the Barker Tower in York, a fourteenth century building which was reroofed in the seventeenth century. The beams of the conical roof, much repaired, were hidden by a ceiling removed in 1970. The delightful sketch on the right is by Allan Adams and shows the exterior of the tower, which is now occupied by the Perky Peacock café so you can enjoy coffee and cake whilst trying to work out the timbers! You'll find the building by the riverside below Lendal Bridge.

Lorraine Moor



Publications

Historic Building Mythbusting by James Wright, June 2024, £20 or less. Buildings archaeologist James seeks to uncover the real stories behind myths relating to secret passages and hidden tunnels, strange marks and carvings, ships' timbers, spiral staircases, and claims of being the oldest pub in the country.

'A Reappraisal of the Twelfth-Century Building at Burton Agnes, East Yorkshire' by Nick Hill and Mark Gardiner, *Yorkshire Archaeological Journal* (forthcoming).

Temple Newsam and Temple Hirst: Tudor Palaces of Lord Darcy of the North by Peter Brears. Thoresby Society 2022, 110p. Illustrated with Peter's characteristic paintings and sketches, including reconstructions, elevations and plans, showing the disposition of room contents based on several inventories. Temple Hirst is near Selby and is now a farmhouse with a tower. Available from thoresby.org.uk at £15 + £4.50 p&p, or can be purchased from Leeds Library.

The *Wessex Archaeology Online Library* is a new, free, research resource which brings together over 45 years of archaeological research comprising 75 books and 155 reports. The range of topics and disciplines covers archaeological fieldwork, marine archaeology, geophysics, geoarchaeology, built heritage and many finds and period specialisms. Access the library at wessexarchaeologylibrary.org.

Don't be scared ...

Kevin Illingworth suggests that another good way to explore villages and observe buildings is to wander round a scarecrow festival. Well-known scarecrows-with-gardens festivals are at Wray, in the Lune Valley, and Trawden, Pendle. Kevin advises that there's no need to be shy in a village where there are interesting vernacular buildings and scarecrows! Some suggestions are:

- Cottingham Scarecrow Festival: Thursday 22 to Monday 26 August 2024.
- Higham Scarecrow festival: Saturday 24 to Monday 26 August 2024. Trail sheet is £3.
- Norland Scarecrow festival: Friday 6 to Sunday 8 September 2024.

Can you identify these buildings?

Leodis is an online photographic archive of Leeds, containing over 70,000 images. Some Leeds Museums photos have recently been added but there are many unidentified buildings in the collections. These can be viewed on the website www.leodis.net/CanYouHelp? where you can provide information about the buildings if you recognise them.

Knabb's Hall on the market

In Newsheet No 111 Peter Thornborrow referred to this interesting house near Silkstone to which we were unable to gain access for recording. The property has recently been put on the market and some photos and floor plans can currently be found on the website of the estate agent, Simon Blyth. Offers of over £1 million are invited before 28 August 2024!

Other events of possible interest ...

We recommend that you check for any updated information if you plan to attend an event, in case of late changes to schedules.

Rooftop Experience at Temple Newsam

Various dates and times

Visit the cellars and rooftop, £25. See museumsandgalleries.leeds.gov.uk/temple-newsam/.

Tours of The Folly, Settle

Various dates

Explore the history and architecture of this Grade I listed house and museum. Free tours, details at thefolly.org.uk.

Heptonstall Town

Monday 26 August 2024

A stroll around the buildings and historic townscape with John Billingsley. Cost £4. www.calderdaleheritagewalks.org.uk.

Hawes Town Trail

Tuesday 27 August 2024

A Yorkshire Dales National Park Authority guided walk. 2-4pm. 2½ miles. Cost £5. www.yorkshiredales.org.uk.

Historic Building Mythbusting – Uncovering Folklore, History and Archaeology

Thursday 29 August 2024

A free online talk by Dr James Wright for Yorkshire Archaeological & Historical Society, 7.30pm. Book at www.ticketsource.co.uk/yahs.

What the landscape tells us: a guided walk around Reeth and Grinton

Saturday 7 September 2024

A walk for Swaledale & Arkengarthdale Archaeology Group led by Alan Mills, 9.45am to 1pm, 2½ miles. swaag.org.

Magical House Protection

Saturday 7 September 2024

A talk by Brian Hoggard, 2pm at Ryedale Folk Museum, Hutton-le-Hole, £5. Book via www.ryedalefolkmuseum.co.uk.

Walking East Yorkshire Festival

14 to 22 September 2024

Includes tours of historical towns and villages such as Beverley, Howden and Hornsea as well as rural walks. Details at www.walkingeastyorkshirefestival.co.uk.

Sowerby Bridge West End

Sunday 15 September 2024

An urban walk with David Cant looking at the history of this area around the old bridge, mills and railway stations. www.calderdaleheritagewalks.org.uk

Managing heritage at local level – what do conservation officers do (all day)?

Tuesday 17 September 2024

An online talk by Bob Kindred for Historic Buildings & Places. 6pm, £4. See hbap.org.uk/news-events/events.

Revising Pevsner – the North Riding

Thursday 19 September 2024

A talk by Jane Grenville. Free, 7.30pm, in person at Wakefield Town Hall or online by Zoom. Book at wakefieldcivicsociety.org.uk/events.

Richmond Walking and Book Festival

20 to 29 September 2024

The programme includes walks to explore Dales Barns of Upper Swaledale, Former Chapels of Arkengarthdale, and Richmond's Wynds and Lanes. More information at www.booksandboots.org.

Geology and Archaeology around Malham

Sunday 22 September 2024

A Yorkshire Dales National Park Authority event. 9.30-4pm, £30. www.yorkshiredales.org.uk.

Vernacular Buildings in Craven and the Forest of Bowland

Monday 23 September 2024

A talk by Kevin Illingworth to Upper Wharfedale Field Society. 7.30-9pm, £3. At the Octagon, Town Hall, Grassington. uwfs.org.uk.

Coley Hall, Calderdale

Wednesday 25 September 2024

A talk by Bob Horne to Lightcliffe and District Local History Society in Lightcliffe CE Primary School, 7.30, £3. www.lightcliffehistory.org.uk.

York Unlocked

Saturday 5 and Sunday 6 October 2024

A programme of free events and open buildings. See york-unlocked.org.uk.

Three Villages Meet

Sunday 6 October 2024

A walk around Northowram, Hipperholme and Shelf. www.calderdaleheritagewalks.org.uk

One Side of Skircoat: The Green

Sunday 13 October 2024

A walk with buildings from three centuries. www.calderdaleheritagewalks.org.uk

A Passion for Tradition: keeping traditional building skills alive

Thursday 17 October 2024

Various speakers. Free, 7.30pm, in person at Wakefield Town Hall or by Zoom. wakefieldcivicsociety.org.uk/events.

CBA Yorkshire Autumn Showcase

Saturday 19 October 2024

An event with speakers and stalls, to be held in Wakefield Town Hall. Details to follow at cba-yorkshire.org.uk.

Yorkshire Archaeological and Historical Society Conference

Saturday 19 October 2024

A variety of lectures on the history of the county. At the Old Swan Hotel in Harrogate, programme to be published at www.yas.org.uk.

Secret Leeds: Bringing the past to life through archive and archaeology

Thursday 7 November 2024

Short presentations and discussion on the secrets hidden in Leeds' archives and libraries, and how you can use them. 4pm-7pm, booking from September at www.librariesinleeds.org/events.

Speke Hall

Tuesday 19 November 2024

A talk by Roy Wainwright to Todmorden Antiquarian Society at the Community College, Todmorden. 7pm for 7.30pm. £3. www.todmordenantiquarians.co.uk.

Chair: David Cant, 3 Middle Hathershelf, Luddendenfoot, Halifax HX2 6JQ, enquiries@yvbsg.org.uk

Secretary: Mary Cook, 34 Porter Close, Durham DH1 5ZL, secretary@yvbsg.org.uk or enquiries@yvbsg.org.uk

Membership Secretary: Pat Leggett, 11 Lonsdale Meadows, Boston Spa, West Yorks LS23 6DQ, membership-secretary@yvbsg.org.uk

Treasurer: Jan Goode, treasurer@yvbsg.org.uk

Archivist: David Cook, 34 Porter Close, Durham DH1 5ZL, archivist@yvbsg.org.uk

Yorkshire Buildings Editorial Team: Tony Berry, Tony Robinson, Beth Shurter, editor@yvbsg.org.uk

Newsheet, Web and Social Media: Lorraine Moor, 102 Queen Victoria Street, South Bank, York YO23 1HN, newsheet@yvbsg.org.uk