



# Timber Framed Vernacular Buildings in Yorkshire



**Saturday 8<sup>th</sup> March 2008**  
10.00am to 4.15pm

Leeds Metropolitan University, Headingley (Beckett's Park) Campus, Leeds

---

A long-overdue look at timber-framing in Yorkshire from a variety of historical and constructional aspects.

The venue is the Headingley campus of Leeds Metropolitan University. It is a few miles to the north west of the city centre, easily accessible from the Leeds outer ring road (see map overleaf). There is plenty of parking on the campus. Tea, coffee and biscuits on arrival, a buffet-style sandwich lunch, and other refreshments at intervals through the day are all included.

NB the talks will start at approximately 10.30am after registration. These proceedings will then be followed at approximately 4.30pm by the AGM of the YVBSG.

---

## **The Study of Timber-Framed Buildings**

*Colum Giles (English Heritage)*

## **Before the Black Death: Timber-Framed Construction in Yorkshire circa 1250-1350**

*Barry Harrison (YVBSG)*

## **"Ships Timbers?" – a Look at Reused Timber**

*Alison C Armstrong (YVBSG)*

## **Dendrochronology in Yorkshire: where are we now?**

*Ian Tyers (Dendrochronological Consultancy Limited)*

## **Case Study – Longley Old Hall**

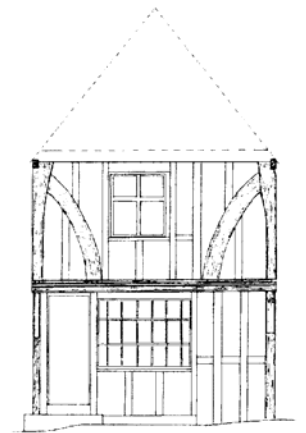
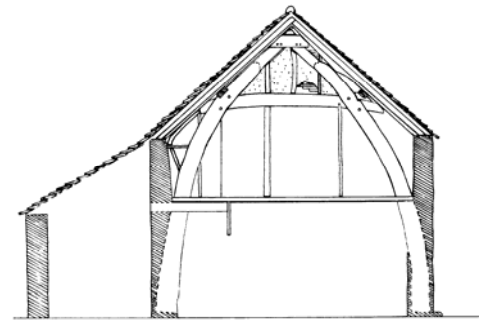
*David Cant (YVBSG)*

## **The Carpenters' System – Scribing the Timbers Together**

*Joe Thompson (Weald and Downland Open Air Museum)*

## **York and its Hinterland – a Timber Framing Puzzle**

*Jane Grenville (University of York Department of Archaeology)*



---

## **Booking**

Cost including buffet lunch and refreshments: YVBSG/YAS Members £22, Students/concessions £22, Others £25  
Detach and send the form below to **David Cook, 23 North End, Sedgefield, STOCKTON-on-TEES, TS21 2AZ.**  
Phone (01740) 620098. Email dcook0@talk21.com

Closing date 1 March 2008. If you wish to book after this date, please phone/email to check availability of places.

---

To: David Cook, 23 North End, Sedgefield, STOCKTON-on-TEES, TS21 2AZ.

## **Timber Framed Vernacular Buildings in Yorkshire**

Please book \_\_\_\_ places for the Day School on 8<sup>th</sup> March 2008 at £22 (YVBSG/YAS members and concessions)

Please book \_\_\_\_ places for the Day School on 8<sup>th</sup> March 2008 at £25 (others)

I enclose a cheque for £ \_\_\_\_\_ (cheques payable to YVBSG, please)

Name(s) \_\_\_\_\_ Telephone no /email \_\_\_\_\_

Please enclose an S.A.E. and tick if you would like an acknowledgement